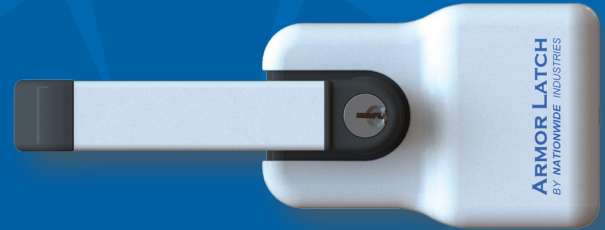




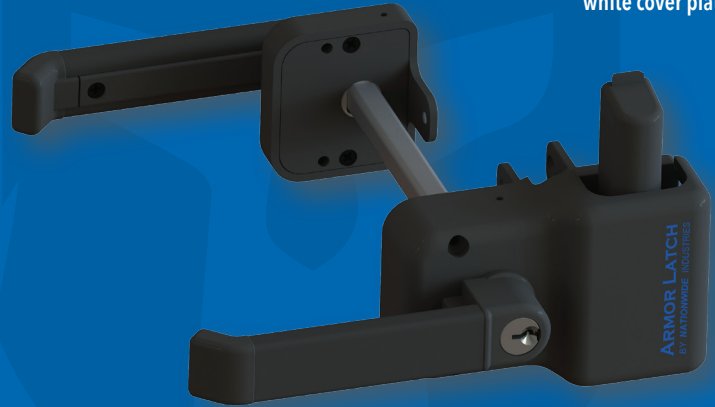
PATENTED
ARMORLATCH™
MAGNETIC LATCH

The ArmorLatch™ offers great choices to improve the look and performance of any gate. Made of glass-filled nylon material for low maintenance, with a strong look and feel.

- Locks and unlocks from either side
- Aluminum cover plates for metal look and color
- Re-keyable to home locks
- Reversible for left and right handed use
- Easy installation including horizontal and vertical adjustability
- Works with double drive gates
- Fits gate frames from 1-1/2" to 5" deep



Shown with white cover plate



Part Number	Description	Count	Case Weight (lbs)
NW6244-SD-FB	Flat Black w/self-drilling stainless steel screws	10 per box	21
NW6244-FB	Flat Black w/non self-drilling stainless steel screws	10 per box	21
NW6244CV-BK	Cover Plates Glossy Black	10 per box	6
NW6244CV-MI	Cover Plates Glossy Unpainted	10 per box	6
NW6244CV-WH	Cover Plates Glossy White	10 per box	6
NW6244CV-BZ	Cover Plates Glossy Bronze	10 per box	6

